

MLDS CENTER

Maryland Longitudinal
Data System

Better Data • Informed Choices • Improved Results

Education & Workforce Data Task Force Meeting

January 11, 2019

Ross Goldstein
Executive Director

Ann Kellogg
Director of Reporting Services

Agenda

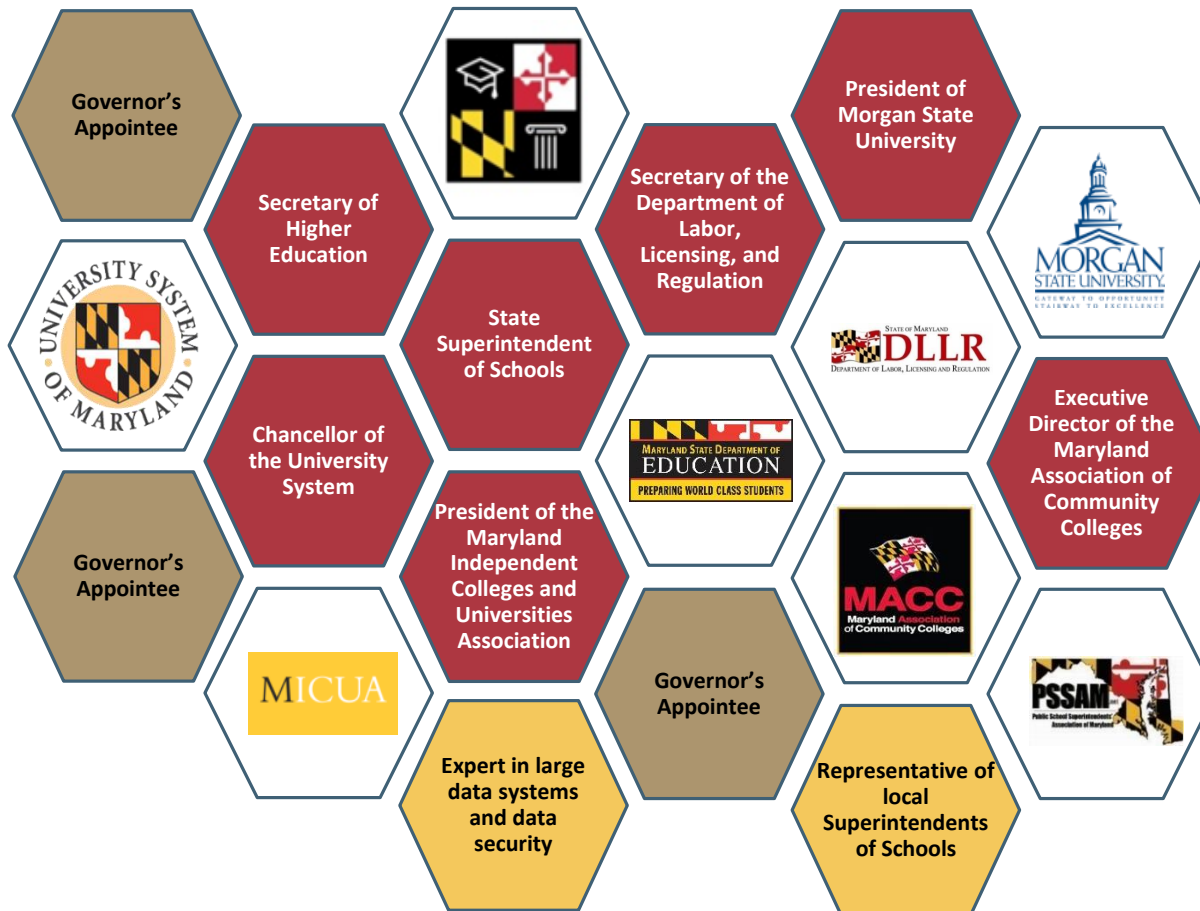
- Governance and Organizational Structure
- Center Output and Output Policies
- Data Management and System Access
- Outreach and Communication

Governance and Organizational Structure

MLDS Center Timeline



MLDS Center Governance



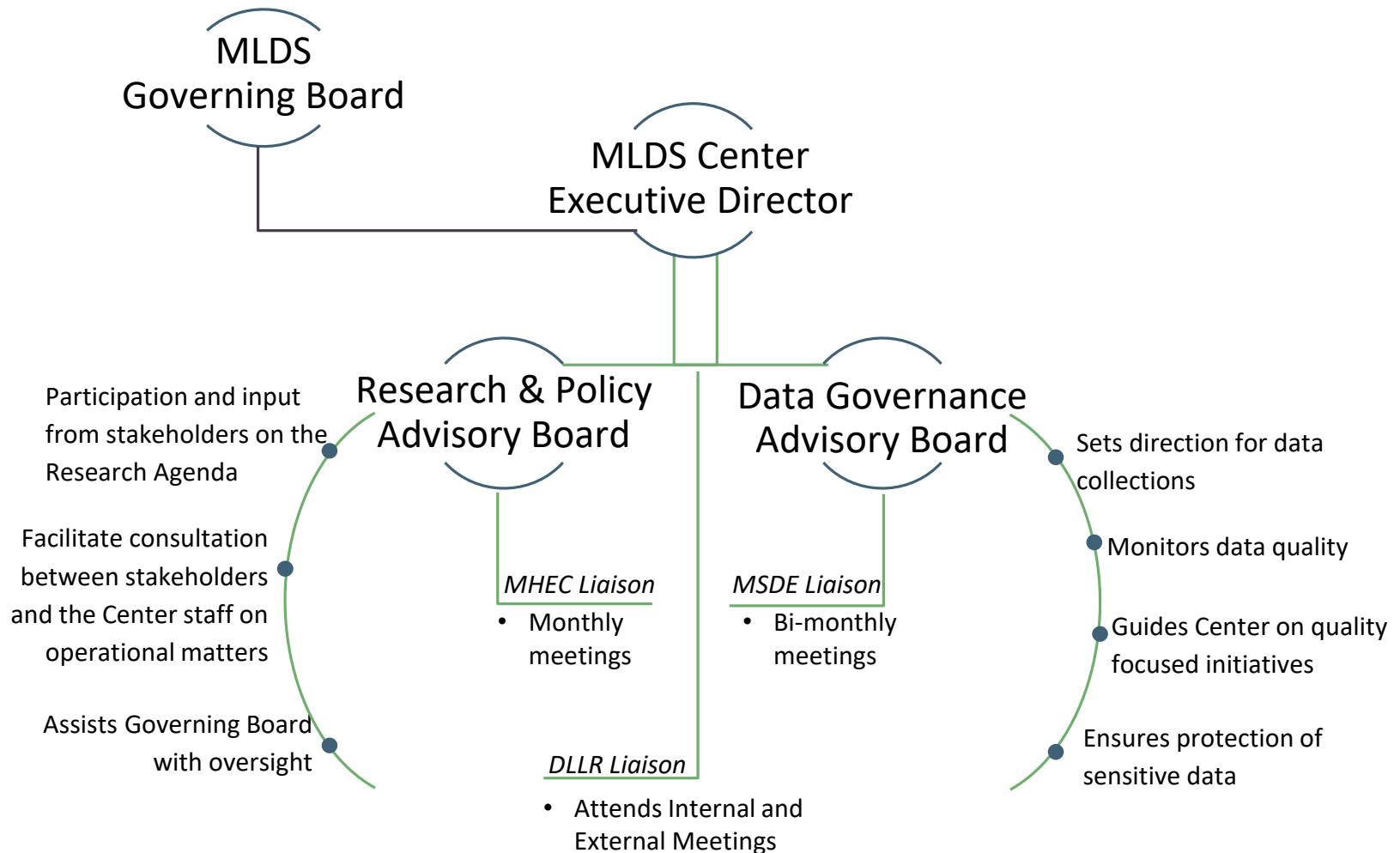
MLDS Governing Board

Established in state law for creating and managing the MLDS

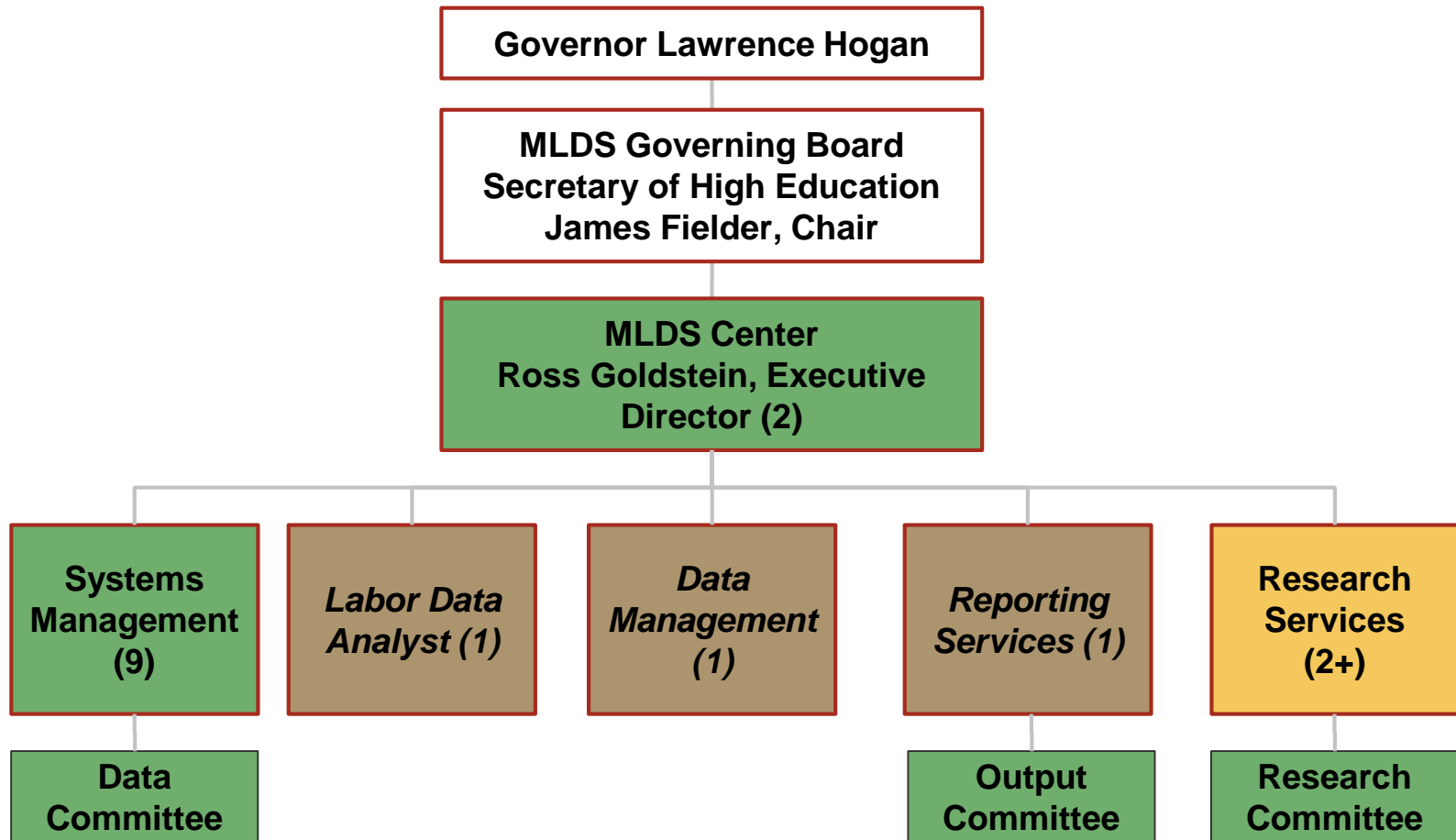
12 Member Board of education and workforce leaders

Makeup of Board ensures the success of the MLDS

MLDS Center Advisory Boards



MLDS Center Organizational Structure



Center Output and Output Policies

Mission and Vision

- **Mission**

- Develop and maintain the Maryland Longitudinal Data System in order to provide analyses, produce relevant information, and inform choices to improve student and workforce outcomes, while ensuring the highest standards of system security and data privacy.

- **Vision**

- Become the leading source in the state of Maryland for accurate, cross-sector, and actionable information on student to workforce transitions and outcomes.

Research Agenda

- Governing Board has created a 20 question **Research Agenda**
- Research Agenda focuses on **Transitions** and must be **Cross-Sector/Cross-Agency**
- Research Agenda Categories
 - A. K-12 Readiness
 - B. Postsecondary Readiness and Access
 - C. Postsecondary Completion
 - D. Workforce Outcomes



Example Agenda Question:

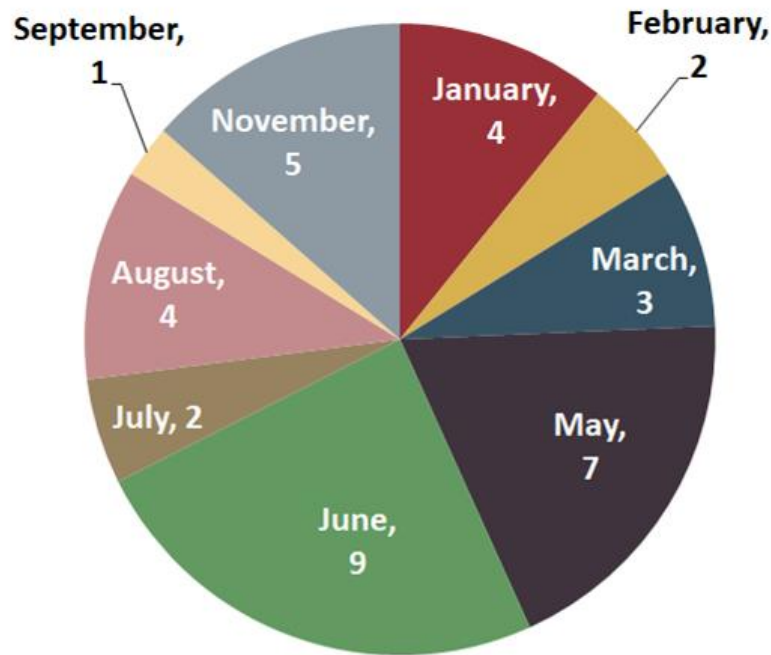
B. Postsecondary Readiness and Access

1. ***Are Maryland students academically prepared to enter postsecondary institutions and complete their programs in a timely manner?***

Output Priorities 2018-2019



Data Requests and PIA

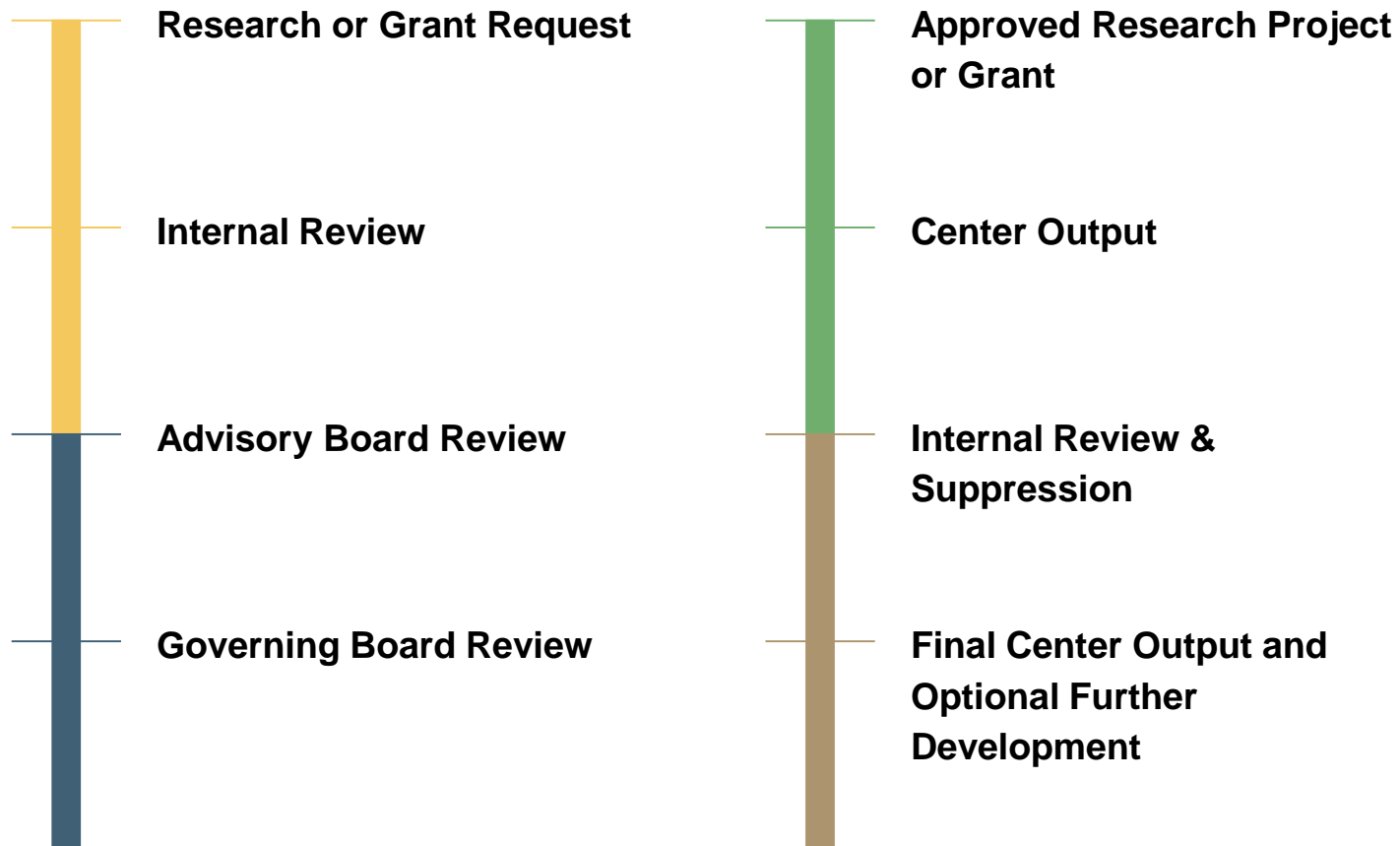


Average Hours	60
Average Data Elements	14

Employment
Dual-Enrollment
Major-Selection
Academic-Preparation
Part-Time
Nursing
CTE
Math
AP-Credit
Teachers
Language
Computer-Science
Science
STEM
Graduation-Rates

Organization	Requests
Postsecondary Institutions	18
MSDE	8
MHEC	1
Other	5
DLS	2
Total	34

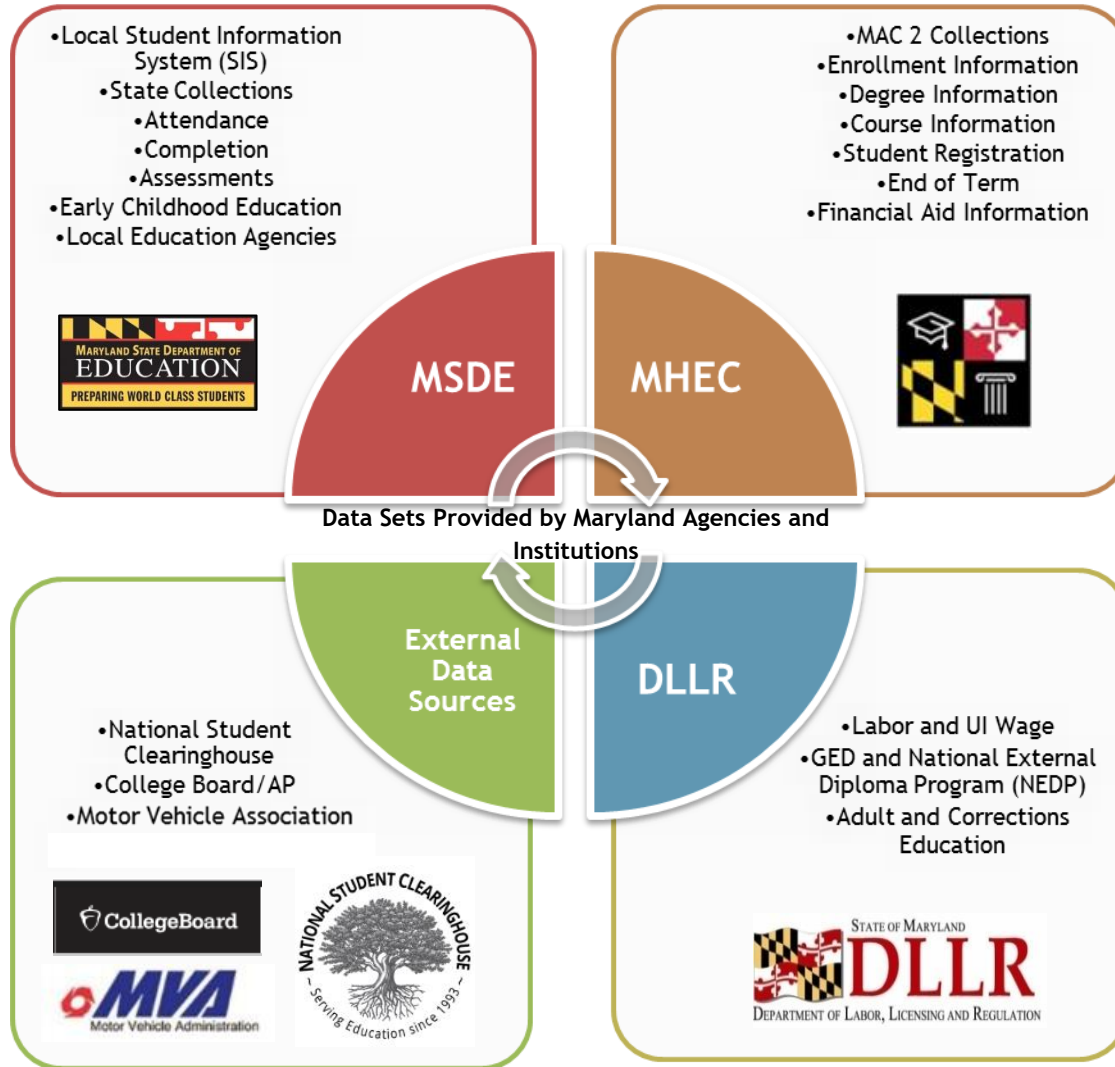
External Researchers and Grant Funded Projects



Data Management and System Access

MLDS Center Data

MLDS Data Delivery System



Data Collection Calendar



Data Inventory



MLDS Data Inventory

Select values below to sort the Inventory:

Domain
 Entity
 Approval Status
 Source

Maryland Longitudinal Data System Center

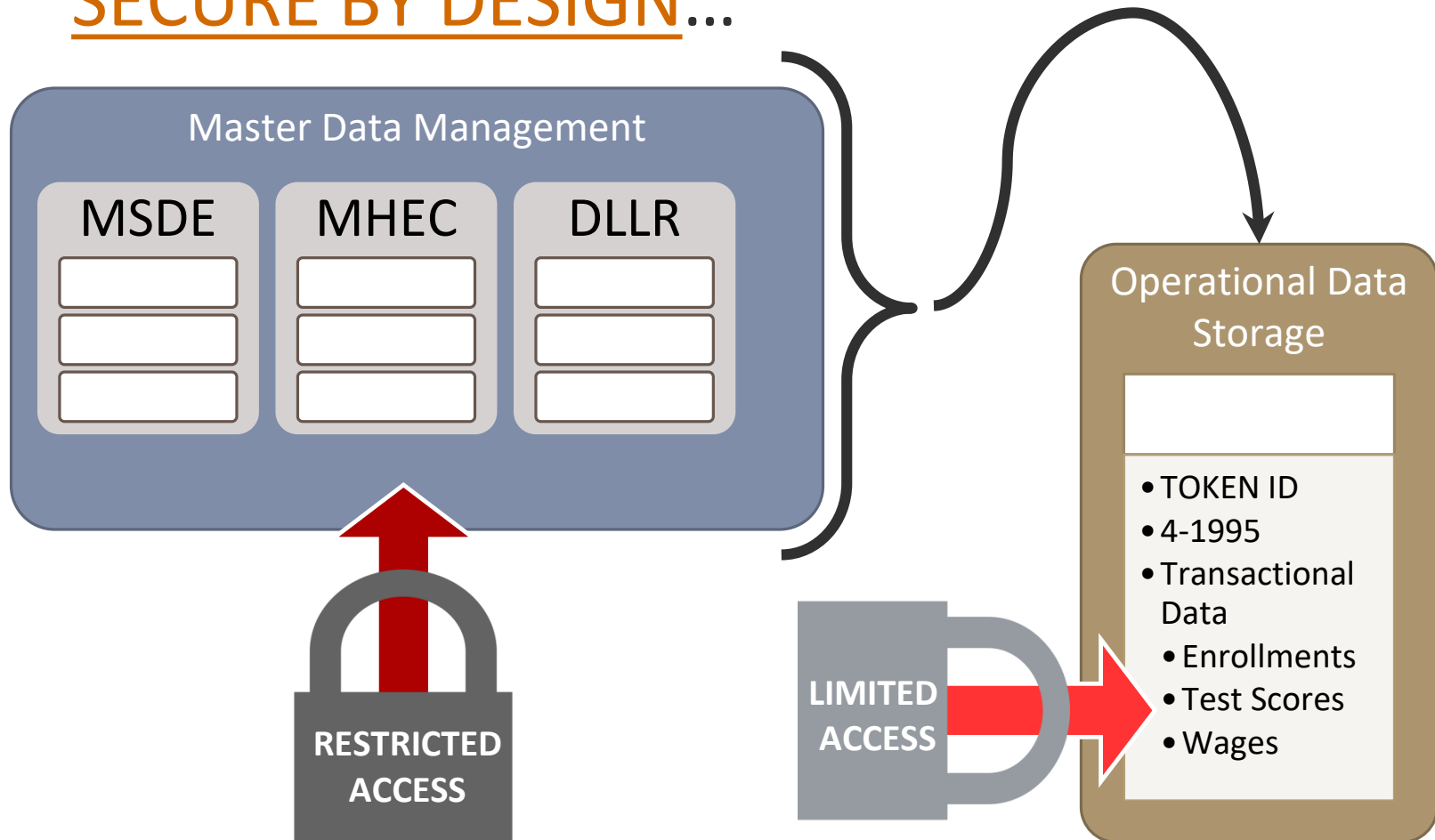
Domain	CEDS Global ID	Entity	Element Name	Approval Status	Availability	Source	Database	Data Load Status	Description
Workforce	000033	AE Student	Birthdate	Approved	2008	Adult Education	MDM	Active	The year, month, and day in which a person was born
Workforce	000115	AE Student	First Name	Approved	2008	Adult Education	MDM	Active	The person's first name as reported from the MLDS Partner Agency
Workforce	000172	AE Student	Last Name	Approved	2008	Adult Education	MDM	Active	The person's last name as reported from the MLDS Partner Agency
Workforce	000184	AE Student	Middle Name	Approved	2008	Adult Education	MDM	Active	A full legal middle name given to a person at birth, baptism, or through legal change
Workforce	000255	AE Student	Gender	Approved	2008	Adult Education	ODS	Active	The gender of the person as reported.
Workforce	000259	AE Student	Social Security Number (SSN)	Approved	2008	Adult Education	MDM	Active	The nine-digit number of identification assigned to the person by the Social Security Administration when available.
Workforce	001288	AE Student	Name of Instructional Program	Approved	2008	Adult Education	ODS	Active	-
PK12	000021	Assessments	Assessment Academic Subject	Approved	2008	Assessments	ODS	Active	The description of the academic content or subject area (e.g., arts, mathematics, reading, science, social studies, writing).
PK12	000024	Assessments	Assessment Form Name	Approved	2008	Assessments	ODS	Active	The name of a given assessment form.
PK12	000026	Assessments	Assessment Purpose						
PK12	000028	Assessments	Assessment Title						
PK12	000029	Assessments	Assessment Type						
PK12	000126	Assessments	Grade Level Weight						
PK12	000177	Assessments	Assessment Level Designed						
PK12	000228	Assessments	Reason Not Tested						
PK12	000245	Assessments	Assessment Reason						
PK12	000366	Assessments	Assessment Form						
PK12	000369	Assessments	Assessment Subject Type						
PK12	000383	Assessments	Assessment Academic Category						
PK12	000415	Assessments	Assessment Type Children With Disabilities						
PK12	000418	Assessments	Assessment Performance Lower Cut Score						

MLDS Data Inventory

The MLDS Governing Board is required to submit an Annual Report under Md. Ed. Art. §24-704(g)(6) to create an inventory of individual student and workforce data approved to be maintained in the system and generally serves to **inform the general public** about the contents of the MLDS database.

Data Access

SECURE BY DESIGN...



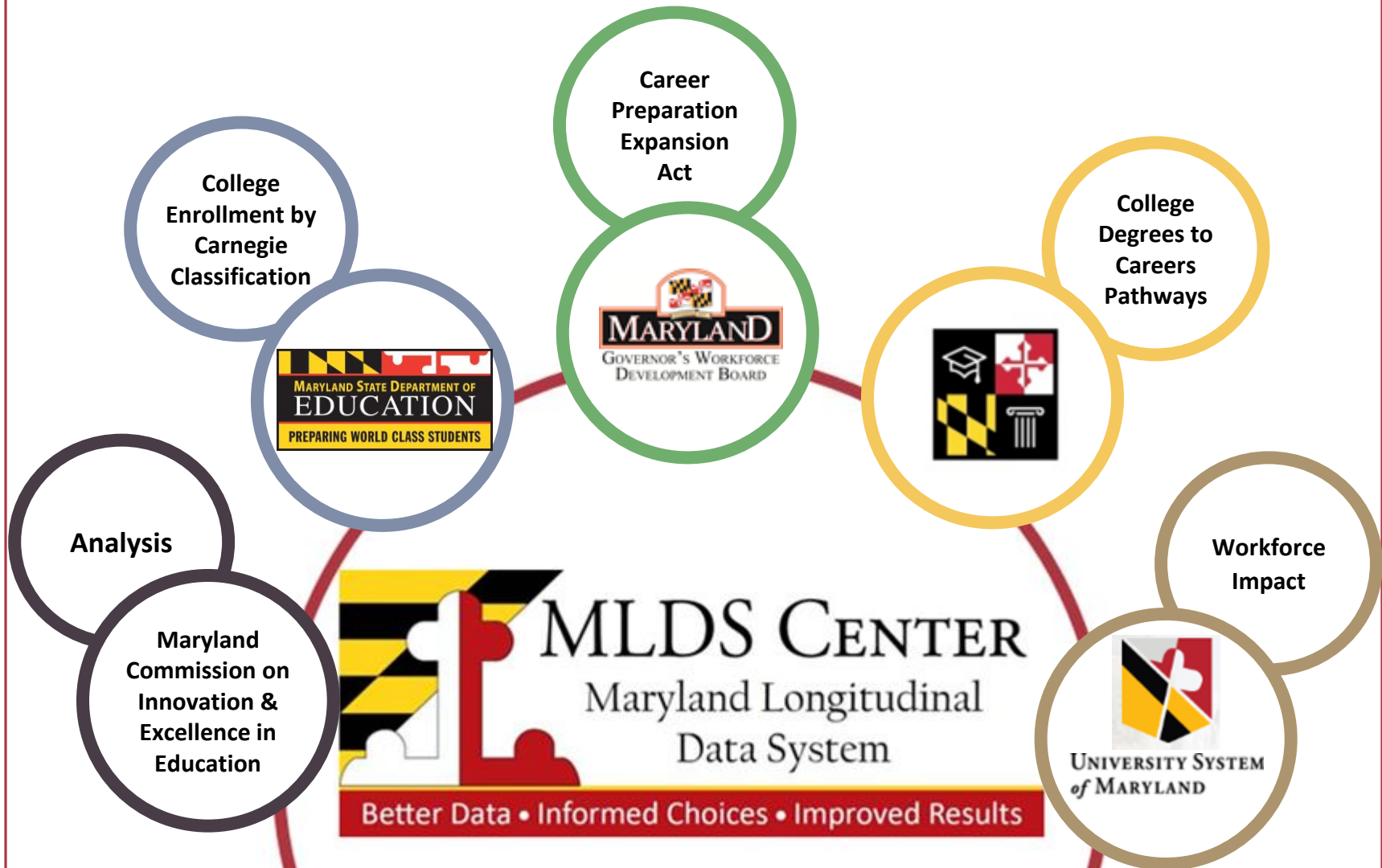
Outreach and Communication

General Communication

- Output and Presentations
 - Predefined distribution lists
 - Subscribe through *StayConnected!*
- Conference Participation
- Monthly Report to Governing Board
- Department of Legislative Services
- P20W Council
- Outreach, outreach, outreach . . .



Collaborative Engagement



More information

<http://mldscenter.maryland.gov>



Ann T. Kellogg
Director of Reporting Services

ann.kellogg@maryland.gov

410-767-0425